

Appendix to “Class and social policy representation”

Table 1: Parties placed by respondents in terms of their social policy priorities

Denmark	Germany	Ireland	Italy	Netherlands	Spain	Sweden	United Kingdom
Socialdemokraterne	Union (CDU/CSU)	Fine Gael	Movimento 5 Stelle (M5S)	Volkspartij voor Vrijheid en Democratie (VVD)	Partido Popular (PP)	Sveriges socialdemokratiska arbetareparti (SAP)	Conservative and Unionist Party
Dansk Folkeparti (DF)	Sozialdemokratische Partei Deutschlands (SPD)	Fianna Fáil	Partito Democratico (PD)	Partij voor de Vrijheid (PVV)	Partido Socialista Obrero Español (PSOE)	Moderata samlingspartiet (M)	Labour Party
Venstre, Danmarks Liberale Parti	Die Linke	Sinn Féin	Lega Nord (LN)	Christen-Democratisch Appèl (CDA)	Unidos Podemos	Sverigedemokraterna (SD)	Liberal Democrats
Enhedslisten – De Rød-Grønne	Bündnis 90/Die Grünen	Labour Party	Forza Italia (FI)	Democraten 66 (D66)	Ciudadanos (Cs)	Miljöpartiet (MP)	
Liberal Alliance	Alternative für Deutschland (AFD)			GroenLinks (GL)		Centerpartiet (C)	
	Freie Demokratische Partei (FDP)			Socialistische Partij (SP)		Vänsterpartiet (V)	
				Partij van de Arbeid (PvdA)		Liberalerna (L)	

Table 2: Social class as a determinant of perceived systemic congruence

	Perceived systemic congruence
Middle class	-0.171* (0.073)
Small business owners	-0.137 (0.128)
Skilled working class	-0.335*** (0.064)
Unskilled working class	-0.487*** (0.089)
Female	0.000 (0.051)
Age	-0.005** (0.002)
Union member	-0.114* (0.057)
Country-FE	✓
Constant	5.359*** (0.125)
Observations	6520
R^2	0.033

Standard errors in parentheses

+ $p < 0.10$, * $p < 0.05$, ** $p < 0.01$, *** $p < 0.001$

Table 3: Social class as a determinant of party and system proximity

	Party proximity consumption	Party proximity investment	Party proximity migration	System proximity consumption	System proximity investment	System proximity migration
Middle class	0.509 (0.357)	-0.079 (0.216)	-0.781* (0.326)	1.037** (0.365)	-0.317 (0.216)	-1.122*** (0.327)
Small business owners	1.259* (0.632)	-0.919* (0.382)	0.238 (0.577)	1.739** (0.645)	-0.897* (0.382)	-0.786 (0.578)
Skilled working class	2.265*** (0.316)	-1.118*** (0.191)	-1.176*** (0.289)	3.116*** (0.323)	-1.441*** (0.191)	-1.907*** (0.289)
Unskilled working class	3.377*** (0.438)	-1.696*** (0.264)	-1.664*** (0.400)	4.519*** (0.447)	-2.154*** (0.265)	-2.575*** (0.400)
Female	-0.210 (0.248)	0.336* (0.150)	-0.590** (0.227)	-0.480+ (0.253)	0.341* (0.150)	-0.063 (0.227)
Age	0.100*** (0.008)	-0.062*** (0.005)	-0.016* (0.007)	0.096*** (0.008)	-0.060*** (0.005)	-0.012+ (0.007)
Union member	0.409 (0.280)	-0.160 (0.169)	-0.337 (0.256)	0.552+ (0.286)	-0.446** (0.169)	0.234 (0.256)
Country-FE	✓	✓	✓	✓	✓	✓
Constant	-1.985** (0.613)	2.368*** (0.370)	-3.134*** (0.559)	-1.523* (0.625)	2.342*** (0.370)	-3.980*** (0.561)
Observations	6533	6533	6533	6533	6533	6533
R ²	0.070	0.070	0.029	0.080	0.081	0.029

Standard errors in parentheses

+ $p < 0.10$, * $p < 0.05$, ** $p < 0.01$, *** $p < 0.001$

Table 4: Income as a determinant of party and system proximity

	Party prox. consumption	Party prox. investment	Party proximity migration	System prox. consumption	System prox. investment	System prox. migration
4th quintile	0.345 (0.358)	-0.101 (0.219)	-0.388 (0.354)	0.769* (0.365)	-0.351 (0.219)	-0.486 (0.354)
3rd quintile	0.842* (0.361)	-0.539* (0.221)	-0.067 (0.357)	1.292*** (0.368)	-0.780*** (0.221)	-0.244 (0.357)
2nd quintile	1.892*** (0.375)	-1.124*** (0.229)	-0.413 (0.370)	2.558*** (0.382)	-1.499*** (0.229)	-0.620+ (0.370)
1st quintile	2.491*** (0.370)	-1.390*** (0.226)	-0.813* (0.366)	3.187*** (0.378)	-1.854*** (0.227)	-0.812* (0.366)
Female	-0.335 (0.230)	0.345* (0.141)	-0.366 (0.227)	-0.540* (0.235)	0.347* (0.141)	0.039 (0.227)
Age	0.125*** (0.007)	-0.073*** (0.004)	-0.033*** (0.007)	0.122*** (0.007)	-0.070*** (0.004)	-0.034*** (0.007)
Union member	0.178 (0.261)	-0.089 (0.160)	-0.089 (0.258)	0.389 (0.266)	-0.382* (0.160)	0.367 (0.258)
Country-FE	✓	✓	✓	✓	✓	✓
Constant	-2.942*** (0.550)	2.862*** (0.336)	-2.701*** (0.543)	-2.344*** (0.560)	2.738*** (0.336)	-3.527*** (0.543)
Observations	7778	7778	7778	7778	7778	7778
R ²	0.072	0.067	0.020	0.077	0.077	0.017

Standard errors in parentheses

* $p < 0.10$, * $p < 0.05$, ** $p < 0.01$, *** $p < 0.001$

Table 5: Social class as a determinant of party and system proximity across policy fields

	Party prox. pension	Party prox. unemployment	Party proximity childcare	Party prox. tertiary education	Party prox. ALMP	Party prox. benefits for migrants	System prox. pension	System prox. unemployment	System prox. childcare	System prox. tertiary education	System prox. ALMP	System prox. benefits for migrants
Middle class	0.486 (0.725)	0.465 (0.407)	0.090 (0.431)	-0.183 (0.405)	-0.068 (0.374)	-0.781* (0.326)	1.019 (0.738)	1.055** (0.409)	0.004 (0.431)	-0.872* (0.401)	-0.084 (0.373)	-1.122*** (0.327)
Small business owners	0.933 (1.282)	1.433* (0.720)	-0.624 (0.763)	-1.530* (0.716)	-0.507 (0.661)	0.238 (0.577)	1.799 (1.306)	1.679* (0.724)	-0.618 (0.762)	-1.623* (0.709)	-0.451 (0.660)	-0.786 (0.578)
Skilled working class	2.478*** (0.642)	1.931*** (0.361)	-0.866* (0.382)	-1.554*** (0.359)	-0.762* (0.331)	-1.176*** (0.289)	3.639*** (0.654)	2.592*** (0.363)	-0.924* (0.382)	-2.520*** (0.355)	-0.879** (0.331)	-1.907*** (0.289)
Unskilled working class	3.488*** (0.888)	3.132*** (0.499)	-1.989*** (0.529)	-2.356*** (0.496)	-0.600 (0.458)	-1.664*** (0.400)	4.882*** (0.905)	4.155*** (0.502)	-2.109*** (0.528)	-3.682*** (0.491)	-0.671 (0.458)	-2.575*** (0.400)
Female	0.938+ (0.504)	-1.323*** (0.283)	1.145*** (0.300)	0.119 (0.281)	-0.328 (0.260)	-0.590** (0.227)	0.268 (0.513)	-1.228*** (0.284)	1.175*** (0.299)	0.083 (0.278)	-0.235 (0.259)	-0.063 (0.227)
Age	0.237*** (0.016)	-0.036*** (0.009)	-0.079*** (0.010)	-0.093*** (0.009)	-0.013 (0.008)	-0.016* (0.007)	0.243*** (0.016)	-0.052*** (0.009)	-0.074*** (0.010)	-0.092*** (0.009)	-0.013 (0.008)	-0.012+ (0.007)
Union member	1.458* (0.568)	-0.657* (0.319)	-0.103 (0.338)	-0.240 (0.317)	-0.105 (0.293)	-0.337 (0.256)	1.116+ (0.579)	-0.011 (0.321)	-0.211 (0.338)	-0.909** (0.314)	-0.219 (0.293)	0.234 (0.256)
Country-FE	✓	✓	✓	✓	✓	✓	✓	✓	✓	✓	✓	✓
Constant	-5.934*** (1.244)	1.322+ (0.698)	4.162*** (0.740)	3.772*** (0.695)	-0.405 (0.641)	-3.134*** (0.559)	-5.092*** (1.267)	1.582* (0.702)	4.478*** (0.739)	3.224*** (0.687)	-0.636 (0.641)	-3.980*** (0.561)
Observations	6533	6533	6533	6533	6533	6533	6533	6533	6533	6533	6533	6533
R ²	0.063	0.030	0.028	0.046	0.007	0.029	0.069	0.040	0.029	0.064	0.011	0.029

Figure 1: Income differences in proximity to preferred party and the party system
(coefficients indicate differences to the fifth income quintile)

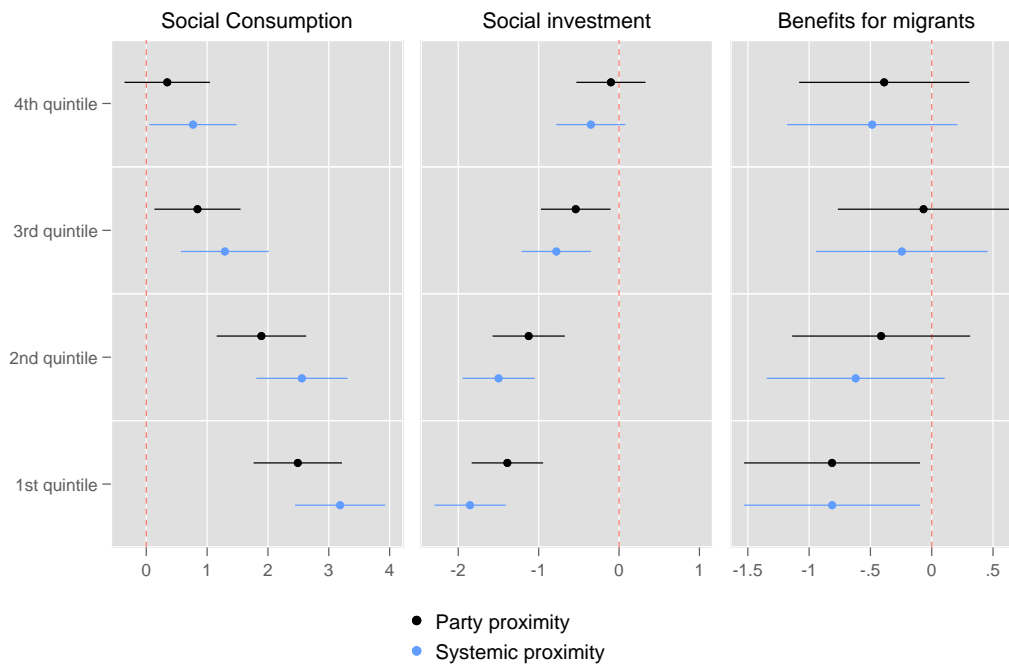


Figure 2: Income differences in proximity to preferred party and the party system
(coefficients indicate differences to the fifth income quintile)

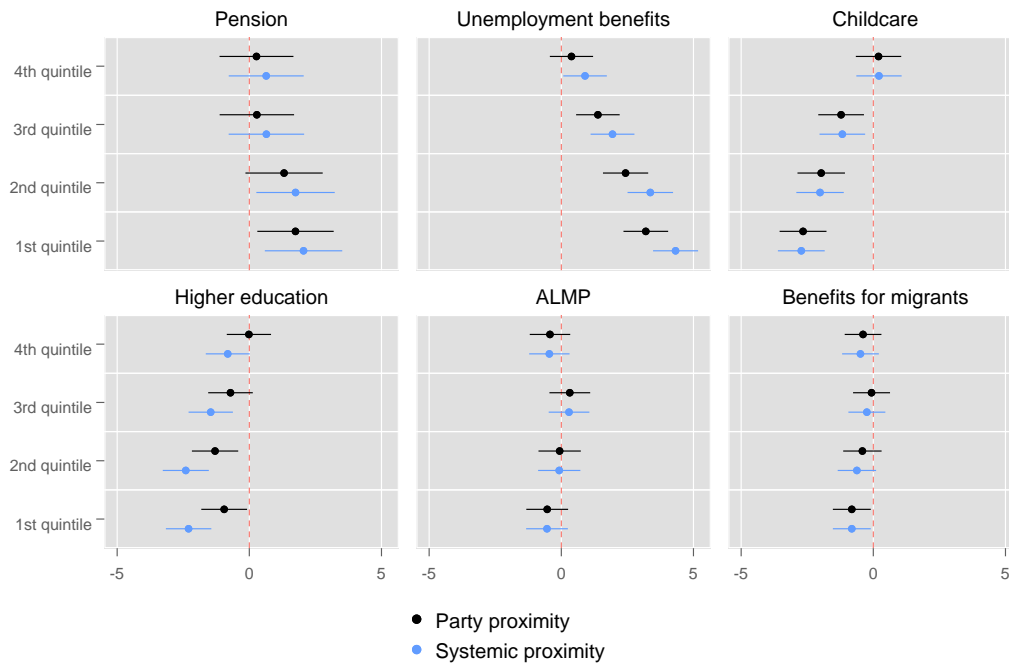


Figure 3: Social class differences in subjective proximity to preferred party and the party system on social consumption, by country

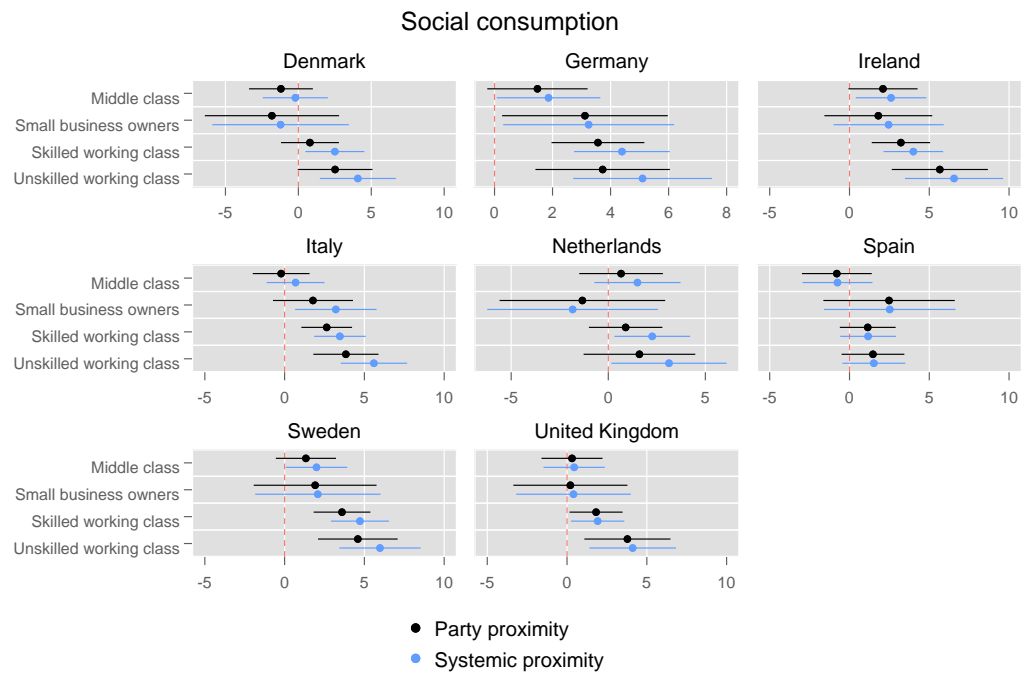


Figure 4: Social class differences in subjective proximity to preferred party and the party system on social investment, by country

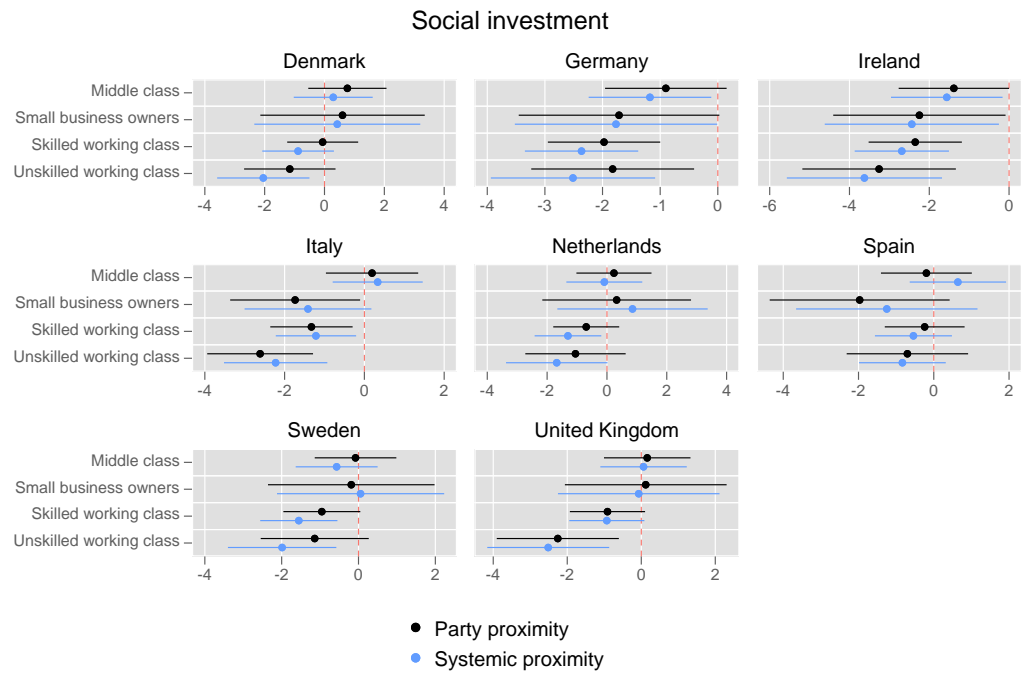


Figure 5: Social class differences in subjective proximity to preferred party and the party system on benefits for migrants, by country

